

geolinerTM 480 / 482

Four-Wheel Aligner for Cars
with CCD Technology under Windows[®]



HOFMANN[®]



geoliner 480

User-friendly application ...



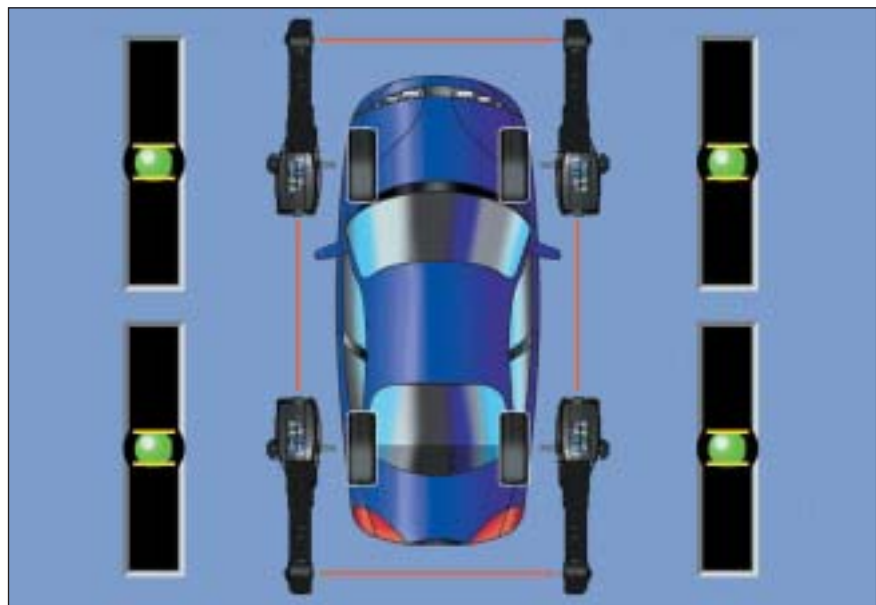
geoliner 480

Standard wheel aligner for universal use

- 8-sensor-CCD technology and alignment program under Windows®
- **NetSpecs™** vehicle specs up-date via internet
- **Geo Pro** 32-bit software
- Multi-tasking allows simultaneous display of several windows
- Optional peripherals, e.g. ROMESS inclinometer
- Additional programs for wishbone/cradle alignment
- Customer database for storage of individual customer data
- Extensive vehicle spec database with adjustment help for more than 5000 vehicles
- Constant system monitoring with error identification
- Hard disc drive for direct inputs
- Printed record via A4 colour printer
- Measurement even when measuring beam is interrupted
- Customised program sequence
- Determination of track width and wheelbase
- Setback, wheelbase and toe-out on turns read out on a single screen
- 24 bit colour resolution
- Simultaneous reading of caster, camber and toe on the monitor to facilitate alignment
- Enhanced vehicle diagnostics
- Simultaneous reading of measured data and vehicle specs

8-sensor technology

The 8-sensor CCD technology is housed in a rugged shell. Data transmission is either by cable, or radio (series 482). Toe, camber, caster, SAI and toe-out on turns are determined in a single measurement and transmitted to the computer for direct comparison with the vehicle specifications.



geoliner 482

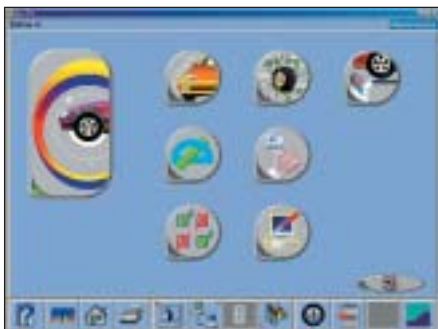
482-MB approved by DaimlerChrysler, see leaflet 9402 670

...with conventional or cordless data transmission ...

geoliner 482

Premium wheel aligner with specific OEM software and/or voice control.

- Compatible with asanetwork
- Network diagnostics
- Simple up-date of vehicle specs and program via CD ROM, or internet
- One-man operator guidance in more than 25 languages
- Automatic calibration check
- Measurement of 4-wheel steering
- Shim program included
- Automatic diagnosis of wheel sensor units
- Control of program sequence via remote control, sensors, or keyboard
- **Voice-controlled alignment with VoiceAlign™**
- Animated 3D alignment screens



Geo Pro Windows Software™

Main menu

Unmistakable icons guide the operator quickly and directly to the desired measurement program and/or to the adjustment program with special functions.



VoiceAlign™

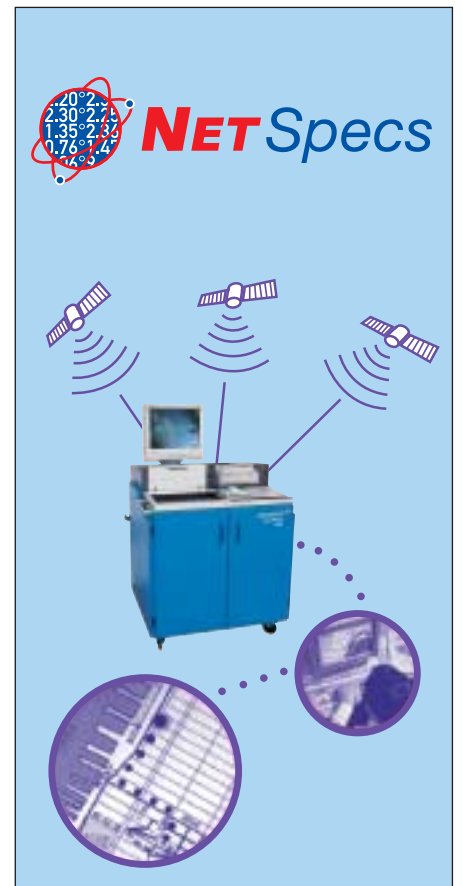
Voice-controlled alignment (optional)

Short and simple voice commands *give unrestricted freedom in measurement and alignment to the operator.*

Net Specs™

Vehicle specs up-date via internet
Simple and independent data up-dates via download from the internet.

(Charged to your credit card)



geoliner 482

... with or without voice control (*VoiceAlign™*)



Voice-controlled wheel alignment

You wonder if they ever listen to you? For sure: the new generation of Hofmann CCD wheel aligners with *VoiceAlign™* does, independent of language or dialect. With geoliner 482 it is possible to control all program steps through a microphone.

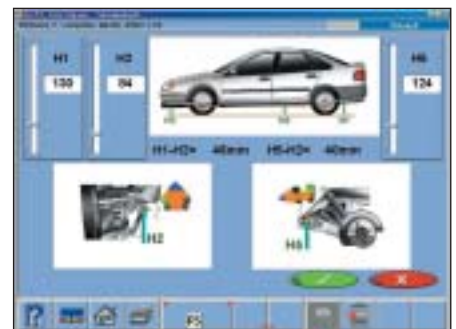
Cordless high-frequency data transmission

The transmission of measured data is accomplished by radio. The cordless version is the ideal addition, or alternative, to the conventional rack wiring kit.



Wheelbase / track width

Easy-to-understand allocation of wheel positions relative to each other for wheel and cradle alignment.



OEM ride height measurement

Vehicle-specific OEM specs show the ride height required for alignment



Toe-out on turns measurement

With the 25° toe measuring range the toe-out on turns is detected directly during a 20° steer with the CCD sensors of the wheel units.



Ride height charting

Automatic illustration of general ride height program required for alignment.

geoliner 480 / 482

Software features at a single glance



EZTrack customer database

Easy search functions (MS Access® format) for vehicles and/or alignments e.g. via customer's name, vehicle registration, or vehicle ID.

OEM's info page

Provides important alignment information to assist identification of OEM models upon a simple click of the "i" key on the keyboard.



Measurement

All measurements are accomplished by turning the steering wheel to the left and right respectively.

Glossary of measurements

Includes all front and rear end data (actual data and vehicle specs) required for professional alignment analysis.

Value	Links	Rechts	Bezugs
Nachlauf	0°40'	0°00'	0°00'
Sturz	-1°02'	0°00'	-1°20'
Spur	0°00'	0°00'	0°00'
Spurgleichung	7°20'	0°00'	7°12'
Eingelassener Winkel	0°24'	0°00'	0°52'
Spurfehlerwinkel	1°01'	0°00'	0°51'
Max. Drehung			
Kadenzwert			
Werte			
Sturz	-1°02'	0°00'	-1°20'
Spur	0°00'	0°00'	0°00'
Gen. Fahrachswinkel			
Kadenzwert			



Measurement

All measurements are accomplished by turning the steering wheel to the left and right respectively.

Glossary of measurements

Includes all front and rear end data (actual data and vehicle specs) required for professional alignment analysis.

7°01'	8°33'
-0°24'	-0°20'
0°00'	0°03'

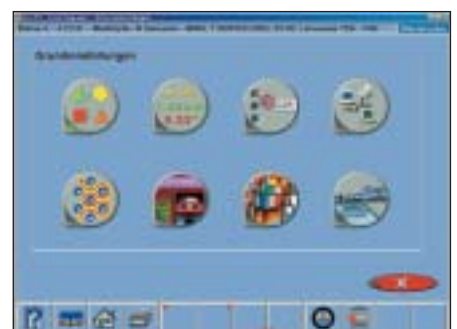


Zoom effect

Facilitates the reading of individual parameters, even at a major distance from the monitor.

Basic adjustment

Customised adjustment of measurement routine and readings



geoliner 480 / 482

Technical data and features

geoliner series	480	482	482R	482-IMB / 482R-IMB
Standard equipment				
8-sensor CCD technology	●	●	●	
Standard wheel clamps (10 - 22")	●	●	●	
Mobile cabinet	●	●	●	
Monitor	17"	19"	19"	
Keyboard	●	●	●	For further information, please refer to our separate leaflet
Mouse	●	●	●	
Colour printer	●	●	●	9402 670
PC standard with sound card, CD ROM, network adaptor	●			
PC premium with sound card, DVD, network adaptor, modem		●	●	
Operating system	● Windows® ●			
Geo Prowheel alignment software	Standard	Premium	Premium	
Infrared remote control	●	●	●	
Steering wheel holder, brake pedal depressor	●	●	●	
Cordless data transmission			●	
Optional extras				
Voice-controlled alignment VoiceAlign™			●	
2 mechanical turntables (front wheels)	●	Option	●	
Lift wiring kit	●	Option	●	
Mechanical turntables (rear wheels)	●	Option	●	
3-point alloy wheel clamps 10-25" (incl. extension)	●	Option	●	
Slip plates, rear, 1 m long	●	Option	●	

Technical data	Measuring range	Resolution
Total toe	± 25°	1'
Camber	± 15°	1'
Caster	± 30°	1'
SAI	± 30°	1'
Toe-out on turns	+ 2° / -5°	1'
Thrust angle	± 12°	1'
Power supply	V	200-240
Mains frequency	HZ	50/60
Capacity of turntable	kg	1000
Frequency of data transmission	GHz	2.4
Resolution of readings	grade sec.	1/100
	deg.	1/60
	inch	1/64
	mm	0.1



3-point alloy wheel clamps

Self-centring wheel clamp for OEM, standard and after market rims

Your Hofmann distributor

Quality counts

- Certified to ISO 9001:2000

